

Installation Manual

Replacing Hinges Old to New



p: (888) 396-9060

Copyright © 2015. v1.0

2



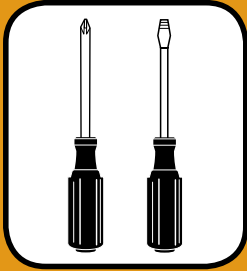
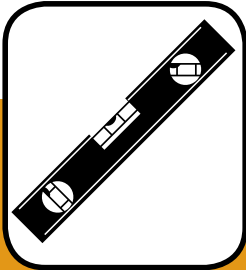
old hinge



new hinge

This is the end result. We will replace the old hinge(s) with the new hinge(s).

Tools Needed:



4



This is the old hinge style to be removed. Use a flathead screwdriver to remove the logo cap.

5



Remove both screws from under the logo cap. Remove the set screw.
Note: set screws are required. Repeat for other hinge.

6



Remove the door and place the door on a clean protected surface to remove hinge.

7



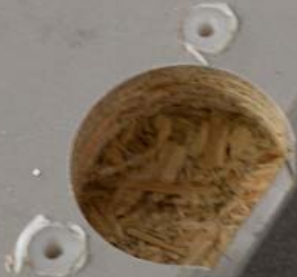
Use a screwdriver to remove hinge from cup mount.

8



Remove two (2) screws and use a screwdriver to lift cup mount out of door.

9



Plastic inserts remain in door. Remove plastic inserts from **only the new cup mount**. Hold the insert and remove the screw.

10



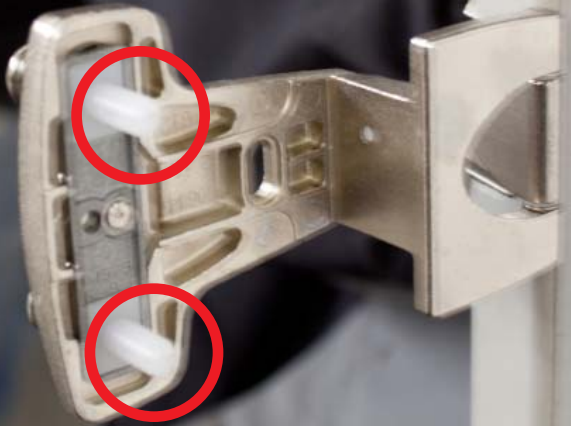
Place the new cup mount portion of the hinge in the door. Fasten with two (2) screws.

11



Secure new hinge to new cup mount hinge until it snaps in place.

12



These other plastic inserts on the hinge will fit into the system holes on the cabinet's side panel.

13



Insert screws into correct system holes and fasten to cabinet side panel.

14

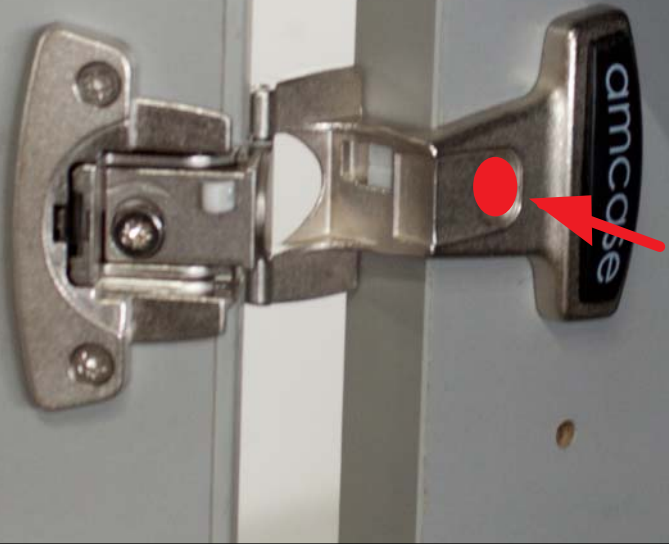
up / down



side to side

Check doors for alignment and adjust as needed. The screw on the cabinet side panel adjusts the door up and down. The adjustment screw in the door mount adjusts the door side to side.

15



After the door is aligned properly, lock each hinge in place with one (1) set screw. Product warranty is void without proper use of set screws. Place logo cap over hinge to cover screws.

16 Final Notes:

- Your setup may require adjustment door faces for symmetrical reveals.
- Make sure to use set screws in the cabinet side panel hinge after all adjustments have been made.
- Wipe down products of dust and remove any stickers (Not the AMCASE logo :)
- THANK YOU!

