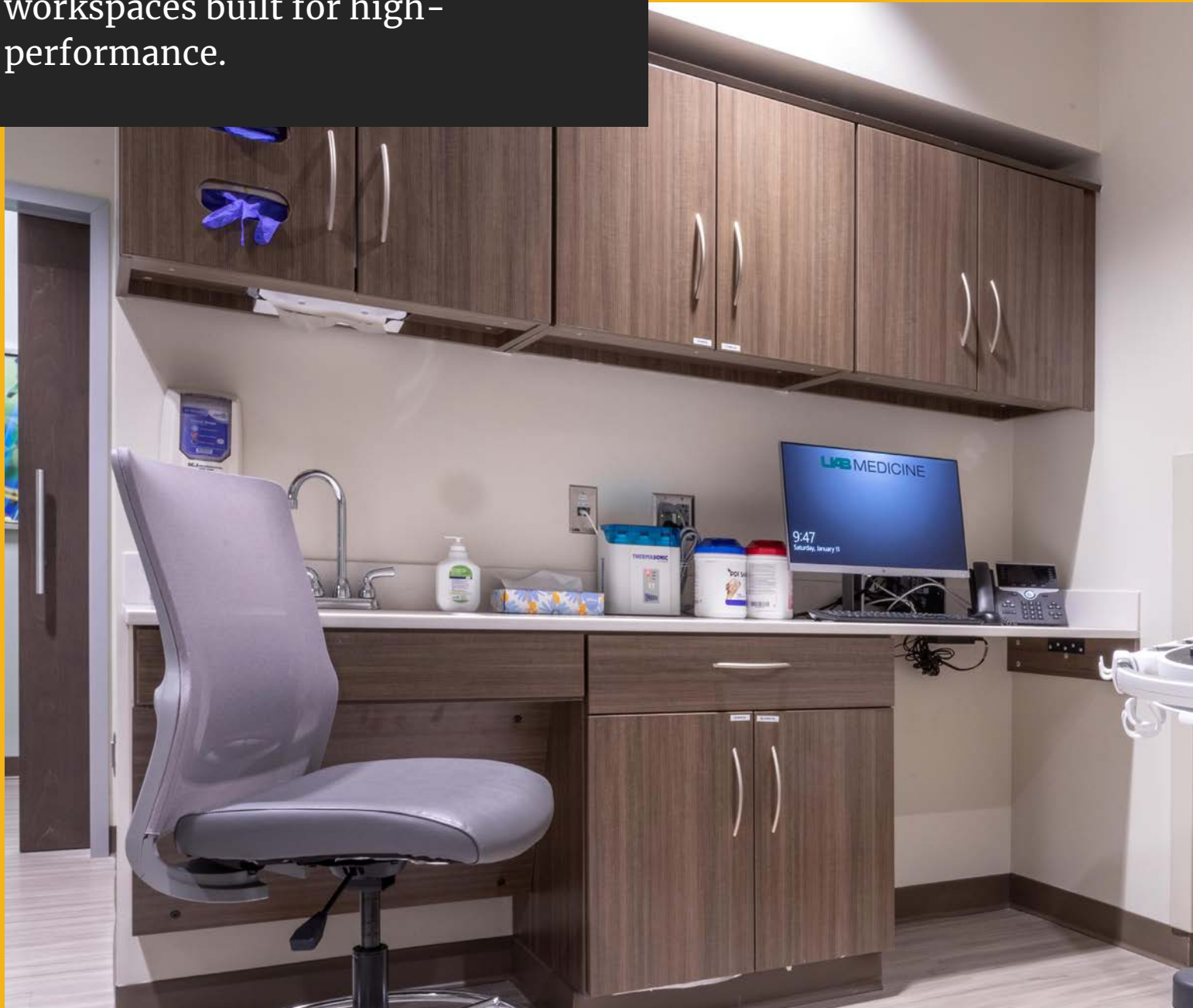


# Casework that works

Durable, modular, flexible  
workspaces built for high-  
performance.



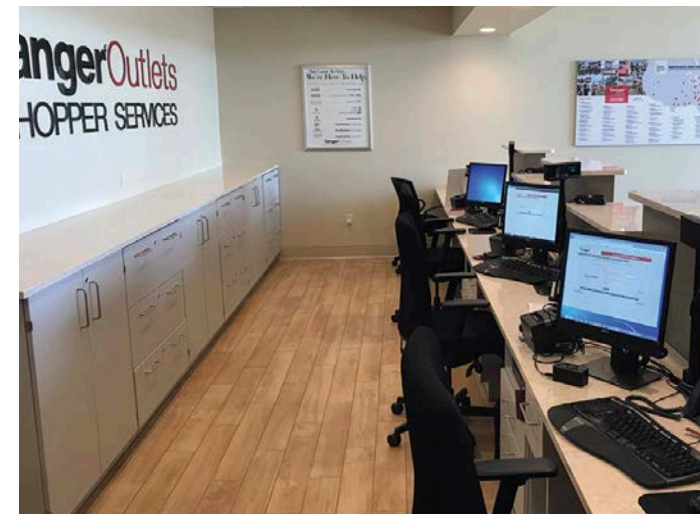
am case

# Casework that works with your vision.

Leave a strong first impression with quality casework that is designed to elevate function and appearance of your space.



- Lobby reception centers
- Information centers
- Patient check-in



# Casework that works now and later.

Transform your space time and time again with modular casework that helps facilities stay neat, orderly and productive.

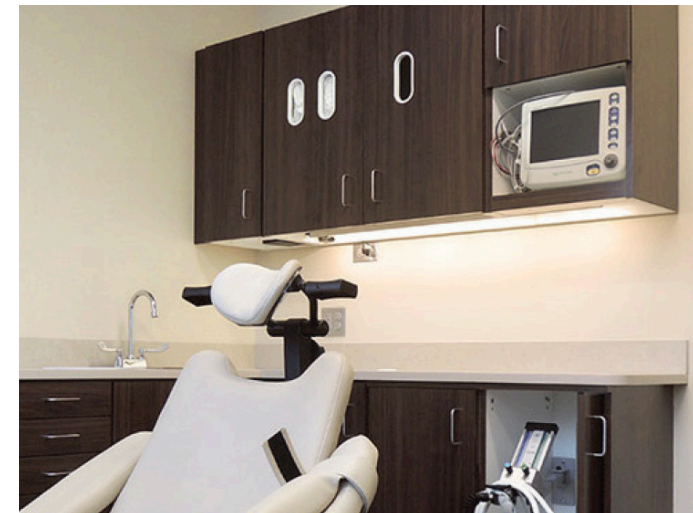


- Laboratory spaces to fit your needs
- Pharmacy & lab organization
- Counters & filing

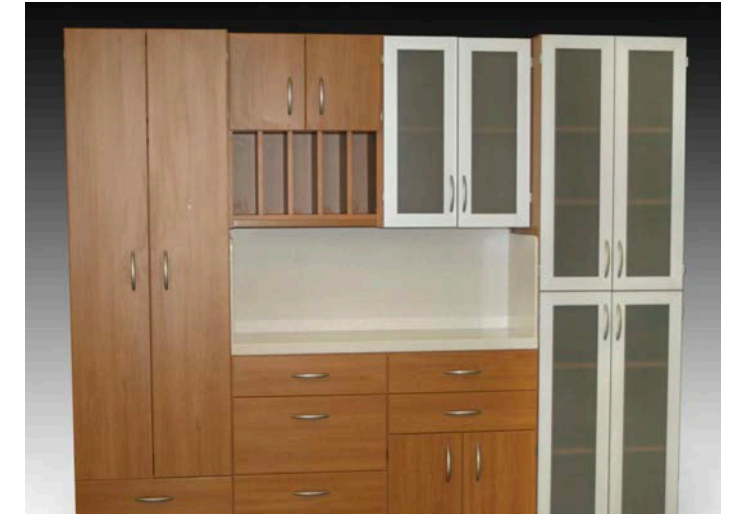


# Casework that works with your budget.

Work with a team who provides careful consideration to create solutions that fit your budget and specifications.

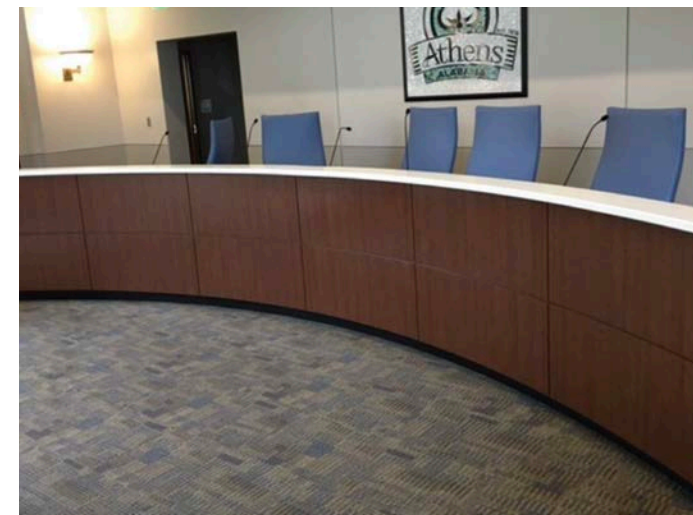
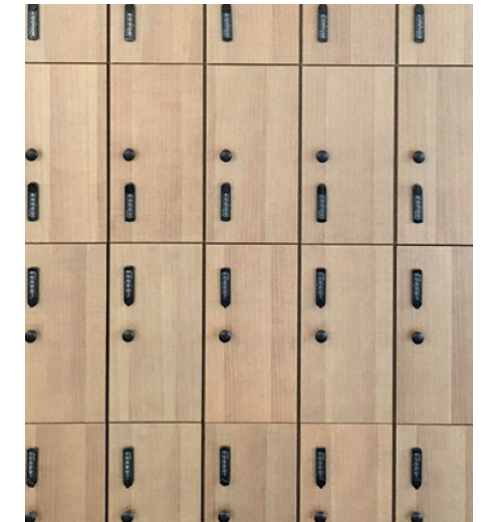


- Everything to support patient care
- Storage & counters configured to your spaces



# Casework that works with your future.

Build high-use spaces with durability in mind. Our lockers are reconfigurable and built to last.



- Lockers & secure spaces
- Schools & gyms



# Casework that works for you.

Whether you are designing an office, retail environment, academic or healthcare facility, AMCASE is your one-stop solution for custom casework.



## Features

- On-site manufacturing
- Over 10,000 standard products to choose from
- Project management team for end-to-end support
- Custom CAD drawings
- Lifetime warranty
- 7 Year depreciation

## Benefits

- Supports JHACO certification
- Meets and exceeds ANSI/BIFMA standards
- USGBS Standards available
- State and Federal contracts



# AMCASE Process

**1.** Fill out a quote request form, available at [amcase.com](http://amcase.com)

## Quote Request



Standard lead time on all quotes is 3-5 business days. Longer lead times are necessary for custom product requests.

### 1 Contact information

COMPANY NAME \_\_\_\_\_ ADDRESS \_\_\_\_\_  
 YOUR NAME \_\_\_\_\_ CITY \_\_\_\_\_  
 EMAIL \_\_\_\_\_ STATE \_\_\_\_\_ ZIP \_\_\_\_\_  
 PHONE \_\_\_\_\_ FAX \_\_\_\_\_

### 2 Quote details \*Quotes are completed in the order they are received.

PROJECT NAME \_\_\_\_\_ DISCOUNT TYPE \_\_\_\_\_  
 ESTIMATED SHIP TO ZIP CODE \_\_\_\_\_

### 3 Finishes

\*Please list finishes if known, otherwise standard AMCASE finishes will be quoted.

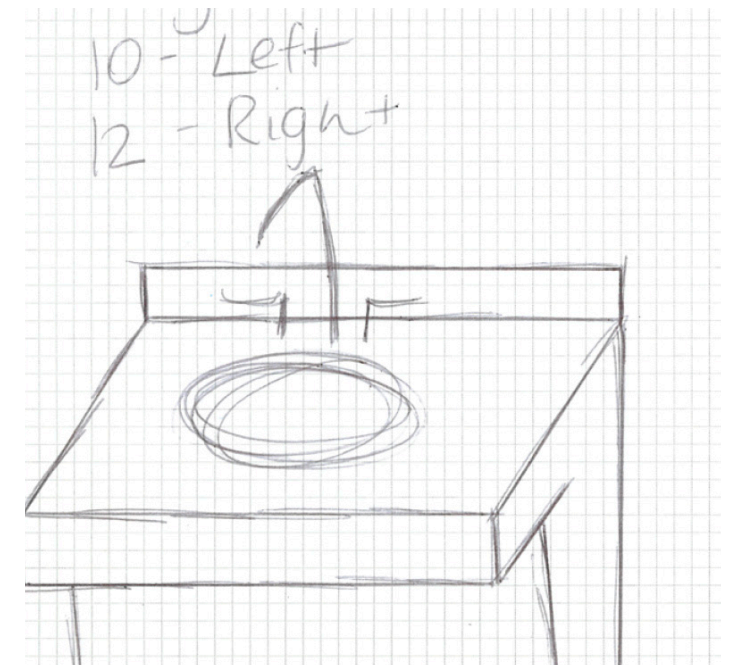
CABINET FINISH \_\_\_\_\_  
 WORK SURFACE FINISH \_\_\_\_\_

[Click here to view finishes](#)

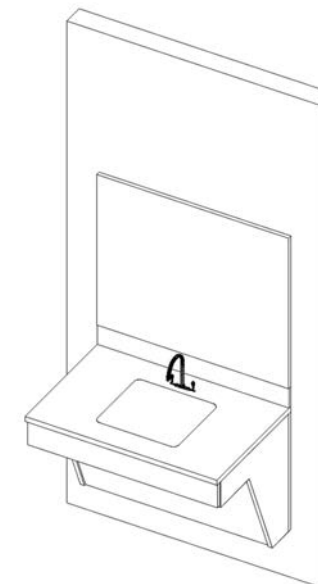
### 4 Accessories

LOCK OPTIONS \_\_\_\_\_  
 SINKS \_\_\_\_\_  
 TASKLIGHTS NEEDED  YES  NO

**2.** Submit design intent & supporting info (sketches, CAD files, etc.)



**3.** Line drawings are reviewed and approved



**4.** AMCASE manufactures your finished product



**2214 Shore St.  
High Point, NC 27263**

**888.396.9060  
amcase.com  
sales@amcase.com**

